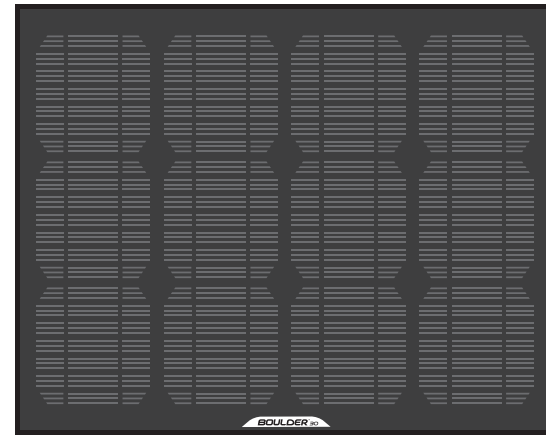


BOULDER™₃₀ S O L A R P A N E L

Get to Know Your Gear



PLUG IT

Power cable links into ESCAPE 150 (with adapter) or EXTREME 350 panels for charging.

SECURE IT

Use the bracket holes to secure the panel to a surface or to multiple BOULDER 30 panels with GOAL ZERO QUICK-CLIPS.

POWER IT

Highly efficient monocrystalline solar cells deliver up to 30 Watts of power.

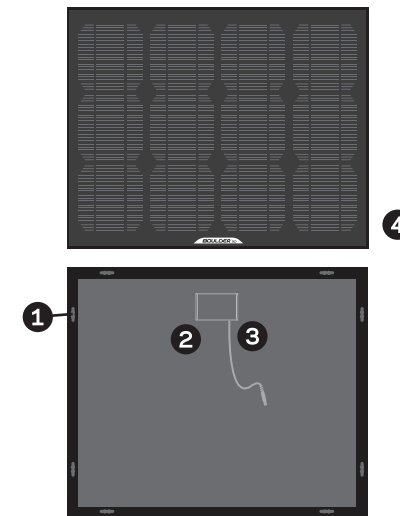
Getting Started

1. Be sure to ACTIVATE YOUR WARRANTY at www.GOALZERO.com/warranty
2. Open and remove from box.
3. Position the BOULDER 30 panel at an angle facing the sun (see below).
4. Connect your ESCAPE 150 or EXTREME 350 power pack to start charging.



How to Use Your Gear

- 1 **Bracket holes**
Use the bracket holes on the side of your panel to hang the BOULDER 30. Also use them to link and stabilize several BOULDER 30 panels together with GOAL ZERO QUICK-CLIPS.
- 2 **Chaining ports**
Connect multiple BOULDER 30 panels to power up your device faster.
- 3 **Power cable**
When in use, plug it in to your GOAL ZERO power pack; when storing wrap it up and secure it with the velcro fastener.
- 4 **Structure**
The BOULDER 30 can take a beating. It is framed with durable aluminum and covered in tempered glass.



Technical Specs

Usage	
Charges the following:	Approx. charge time:
EXTREME 350	12-24 hours
Smart phone, GPS	2-4 hours
Inputs	
Solar panel	Rated wattage: 30W Cell type: monocrystalline Open-circuit voltage: 18-20V Converting eff.: 17-18%
Outputs	
	12V charging port (8.0mm) 14-16V, 2.0A max (30W), not regulated
General	
Weight (no pkg)	6.5 lbs (2.9 kg)
Dimensions	21X18X1 in (53X46X2.5 cm)
Warranty	12 months
Certifications	FCC and CE
Optimal Operating Temp.	32-104°F (0-40°C)

Comes With

12V car adapter

Frequently Asked Questions

Is the BOULDER 30 waterproof?

Yes! The BOULDER 30 is waterproof and rugged terrain resistant. Just remember that the devices you are powering might not be as durable.

What GOAL ZERO power packs can I use the BOULDER 30 with?

The BOULDER 30 can be used to power any GOAL ZERO power pack (some may require an adapter). It is most effective with the EXTREME 350 power pack based on the amount of Watts it produces.

Does the BOULDER 30 give a full 30 Watts?

It delivers up to 30 Watts of power, but the angle of the panels and the cloud coverage can impact its performance. Avoid the shade. It will not work indoors.

Will the BOULDER 30 break?

Not easily. It was made to last, but try to avoid heavy impact that can weaken the frame and cause the glass to crack.

Can the BOULDER 30 be chained with other BOULDER 30?

Yes, you can chain up to four BOULDER 30s.

Compatible With

GOAL ZERO products:
EXTREME 350 power pack



- Fill out your warranty
- Watch demo video
- Download this manual



CONTACT US:

Toll Free: 888.794.6250
14864 Pony Express Road
Bluffdale, UT, 84065

WWW.GOALZERO.COM

We proudly support TIFIE Humanitarian
WWW.TIFIE.ORG