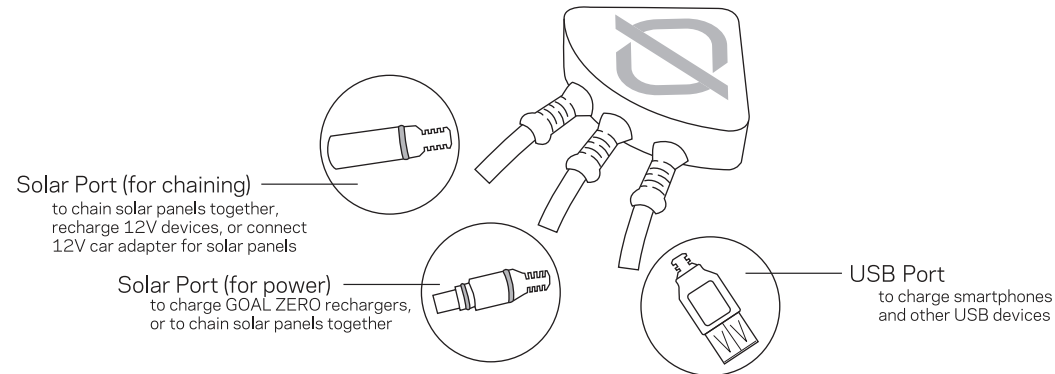


Boulder 15 Junction Box
located on the back of the solar panel



Know Your Gear

BOULDER 15
PORTABLE SOLAR PANEL

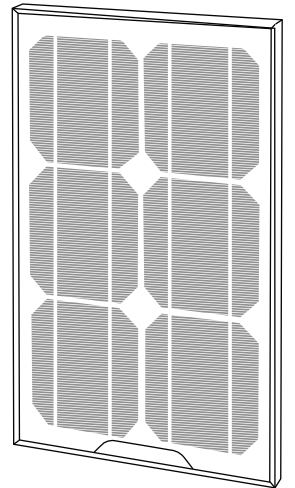


- Register your product
- Watch demo video
- Download user manual



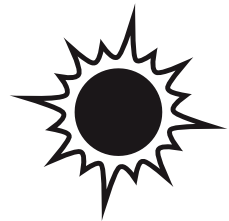
Contact Us:
Toll Free: 888-794-6250
675 West 14600 South
Bluffdale, UT 84065
www.GOALZERO.com

We proudly support Tifie Humanitarian
www.tifie.org



Technical Specifications	
Charges the following:	Approximate Charge Times
Goal Zero Sherpa 50	7-14 hours
Goal Zero Yeti 150	20-40 hours
Solar	
Rated Power:	15 W
Open-circuit voltage:	20-22V
Cell type:	monocrystalline
Ports	
USB port:	5V, up to 1A (5W), regulated
Solar port (blue, 8mm):	14-22V, up to 1A (15W), not regulated

General	
Weight:	3.5 lbs (1.6 kg)
Dimensions:	11 x 18 x 1in (28 x 45.7 x 2.5 cm)
Warranty:	12 months
Tested and Certified:	CE, FCC, RoHS



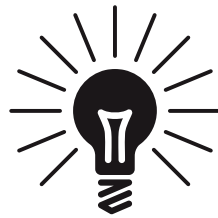
**COLLECT
THE SUN'S
ENERGY.**

(solar panels)



**STORE
POWER
FOR LATER.**

(portable rechargers)



**USE
POWER
FOR LIFE.**

(lights and accessories)

Frequently Asked Questions

Q: Does the solar panel hold a charge?

A: No, the panel produces power only when it is exposed to sunlight. To generate the most power, angle the panel toward the sun. This improves your ability to collect power from the sun. Note: Clouds and windows affect collection efficiency. If you would like to store solar power, combine the Boulder 15 with the Goal Zero Rechargers.

Q: What can I charge directly from the solar panel?

A: USB and 12V devices like cellphones, GPS and iPods. You can plug in a 12V device and a USB device at the same time, however, you will slow down the charge time for both devices.

Q: Is the solar panel waterproof?

A: It is weather-resistant and will not be harmed if exposed to rain or snow.

Q: Can I chain multiple solar panels together?

A: Yes. Chaining additional solar panels together is a great way to reduce solar charge times. You can chain up to four panels at once.

* Plug in any USB or 12V device into the junction box to power directly from the sun.

1

2

3

